

SECTION 30, T.7N., R.2W., S.L.B. & M.

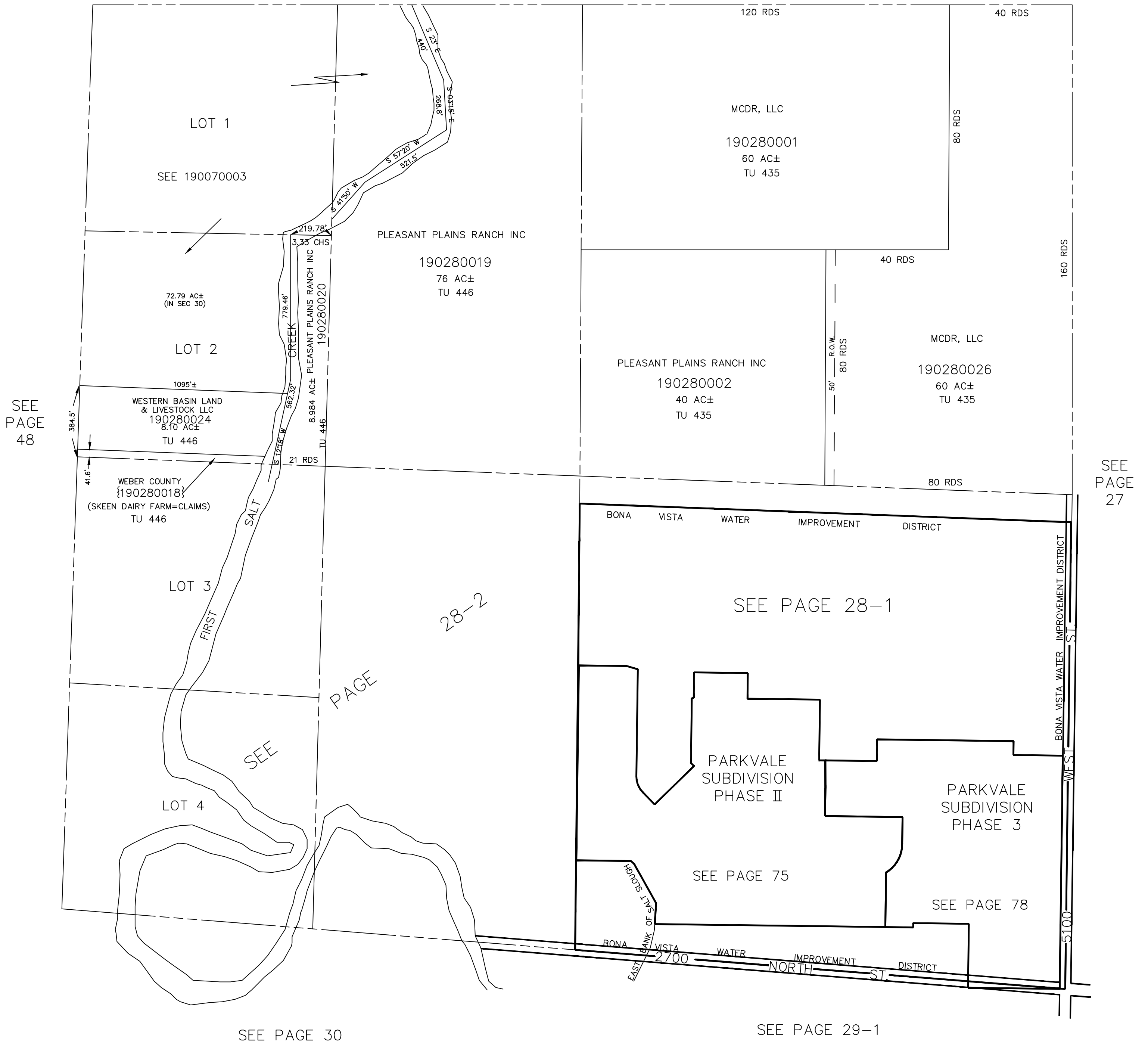
IN WEBER COUNTY, PLAIN CITY

TAXING UNIT: 44, 56, 435, 446

SCALE 1" = 400'

ALSO SEE PAGES 28-1 & 28-2

SEE PAGE 7



SEE PAGE 48

SEE PAGE 27

SEE

PAGE

SEE PAGE 30

SEE PAGE 29-1